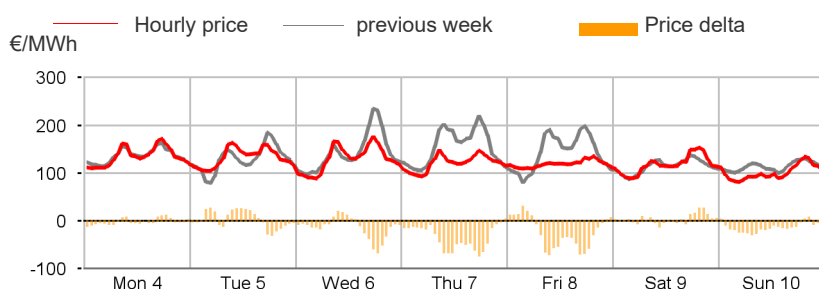


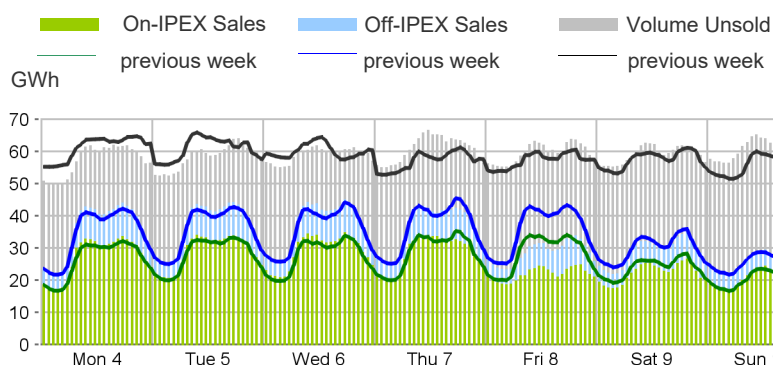
Purchasing Price

	Average	Change	
	€/MWh	Absolute	%
Baseload	123.21	-10.84	-8.1%
Peak	146.16	-18.48	-11.2%
Off-peak	114.02	-3.02	-2.6%
Hourly minimum	81.76		
Hourly maximum	178.07		



Volumes Offered, Sold and Purchased

	Total	Average	Change
	MWh	MWh	%
Bids/offers			
National	8,805,577	52,414	-1.1%
Foreign	1,154,152	6,870	+19.2%
Total	9,959,729	59,284	+0.9%
Sales			
National	4,346,897	25,874	-8.4%
Foreign	1,137,176	6,769	+22.5%
Total	5,484,073	32,643	-3.3%
Purchases			
National	5,401,651	32,153	-2.6%
Foreign	82,424	491	-35.7%
Total	5,484,073	32,643	-3.3%



Electricity Supply

	MWh	Change	Structure
IPEX	4,282,975	-4.0%	78.1%
Market Participants	2,820,843	-12.0%	51.4%
GSE	327,786	-0.1%	6.0%
Foreign zones	1,134,346	+22.3%	20.7%
Balance of PCE schedules	-	-	-
PCE (including MTE)	1,201,098	-1.0%	21.9%
Foreign zones	2,830	+183.0%	0.1%
National zones	1,198,268	-1.2%	21.8%
Balance of PCE schedules	-	-	-
VOLUMES SOLD	5,484,073	-3.3%	100.0%
VOLUMES UNSOLD	4,475,656	+6.5%	
TOTAL SUPPLY	9,959,729	+0.9%	

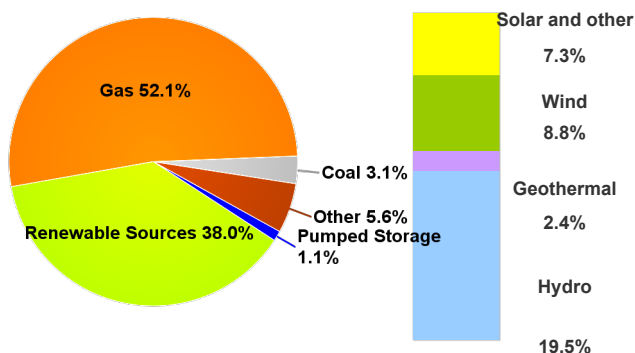
Electricity Demand

	MWh	Change	Structure
IPEX	4,282,975	-4.0%	78.1%
Acquirente Unico	353,105	+7.8%	6.4%
Other market participants	3,149,788	-7.2%	57.4%
Pumped-storage plants	309	-12.85	0.0%
Foreign zones	82,424	-35.7%	1.5%
Balance of PCE schedules	697,350	+14.0%	12.7%
PCE (including MTE)	1,201,098	-1.0%	21.9%
Foreign zones	-	-	-
Acquirente Unico - National zones	4,800	-42.86	0.1%
Other participants - National zones	1,893,648	+4.2%	34.5%
Balance of PCE schedules	-697,350	-	-
VOLUMES PURCHASED	5,484,073	-3.3%	100.0%
VOLUMES UNPURCHASED	186,796	+20.5%	
TOTAL DEMAND	5,670,869	-2.7%	

Volumes Sold by Source

	Total	Average	Change	
	MWh	MWh	MWh	%
Conventional	2,643,796	15,737	-265	-1.7%
Gas	2,266,671	13,492	+180	+1.4%
Coal	134,281	799	-413	-34.1%
Other	242,843	1,445	-32	-2.1%
Renewable	1,653,890	9,845	-2,132	-17.8%
Hydro	848,871	5,053	+75	+1.5%
Geothermal	102,424	610	-13	-2.2%
Wind	383,281	2,281	-2,194	-49.0%
Solar and other	319,314	1,901	+0	+0.0%
Pumped Storage	49,211	293	+26	+9.8%
Total	4,346,897	25,874	-2,371	-8.4%

Structure of Sales



Zonal Selling Price

	Northern IT		Central-northern IT		Central-southern IT		Southern IT		Calabria		Sicilia		Sardegna	
	€/MWh	Var	€/MWh	Var	€/MWh	Var	€/MWh	Var	€/MWh	Var	€/MWh	Var	€/MWh	Var
Baseload	123.28	-11.0%	123.34	-10.9%	123.41	-2.0%	123.41	+1.3%	123.30	+1.2%	123.30	+1.2%	119.41	-5.2%
Peak	146.05	-16.1%	146.19	-16.0%	146.42	-1.2%	146.42	+7.1%	146.03	+6.8%	146.03	+6.8%	146.42	-1.2%
Off-peak	114.17	-3.8%	114.21	-3.8%	114.21	+0.5%	114.21	+0.5%	114.21	+0.5%	114.21	+0.5%	108.60	-4.4%
Hourly minimum	81.76		81.76		81.76		81.76		81.76		81.76		0.00	
Hourly maximum	178.07		178.07		178.07		178.07		178.07		178.07		178.07	

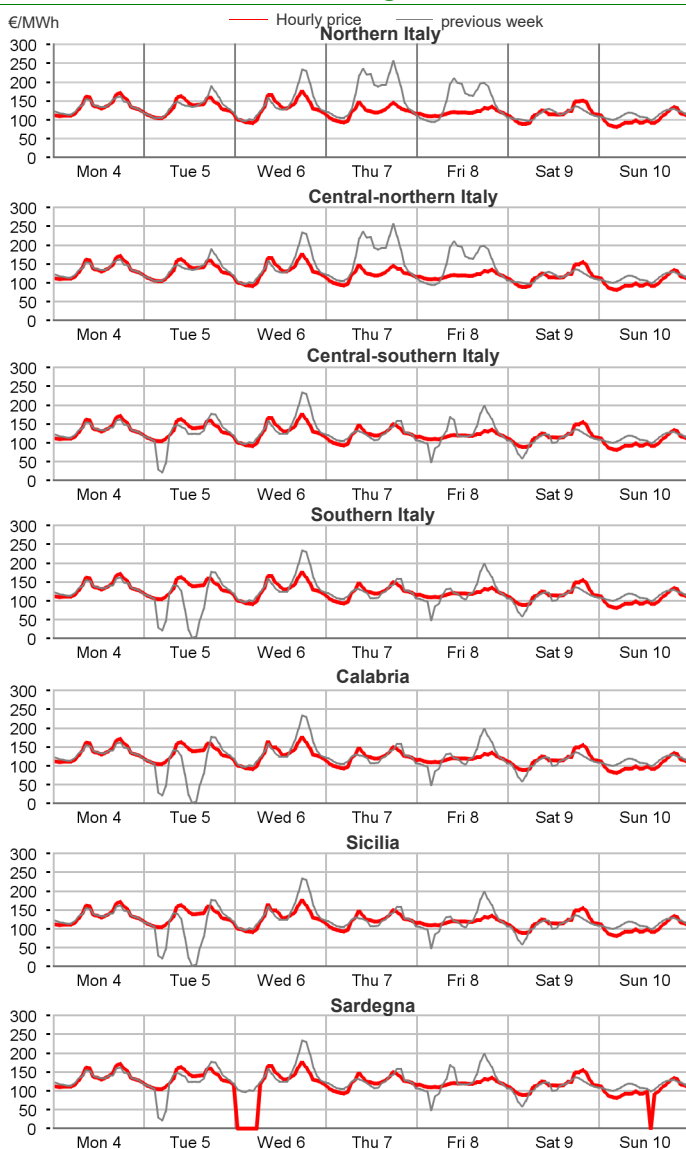
Zonal Volumes

	Northern IT		Central-northern IT		Central-southern IT		Southern IT		Calabria		Sicilia		Sardegna		
	MWh	Var	MWh	Var	MWh	Var	MWh	Var	MWh	Var	MWh	Var	MWh	Var	
Offers	Total	4,634,264	+4.8%	353,941	+0.1%	1,304,738	-12.9%	1,140,918	+0.0%	551,962	-0.2%	535,688	-13.5%	284,065	-11.3%
	Average	27,585	+1,268	2,107	+2	7,766	-1,150	6,791	+2	3,285	-8	3,189	-499	1,691	-216
Sales	Totale	2,445,437	-0.2%	286,192	-1.2%	418,775	-32.5%	439,517	-22.9%	252,494	+2.3%	279,417	-7.8%	225,065	-15.1%
	Average	14,556	-23	1,704	-20	2,493	-1,203	2,616	-779	1,503	+33	1,663	-140	1,340	-239
Purchas	Totale	3,100,591	-4.1%	463,635	-1.9%	954,257	-0.6%	327,482	-0.8%	103,240	+1.6%	298,860	+1.3%	153,587	+0.4%
	Average	18,456	-786	2,760	-53	5,680	-36	1,949	-16	615	+10	1,779	+22	914	+3

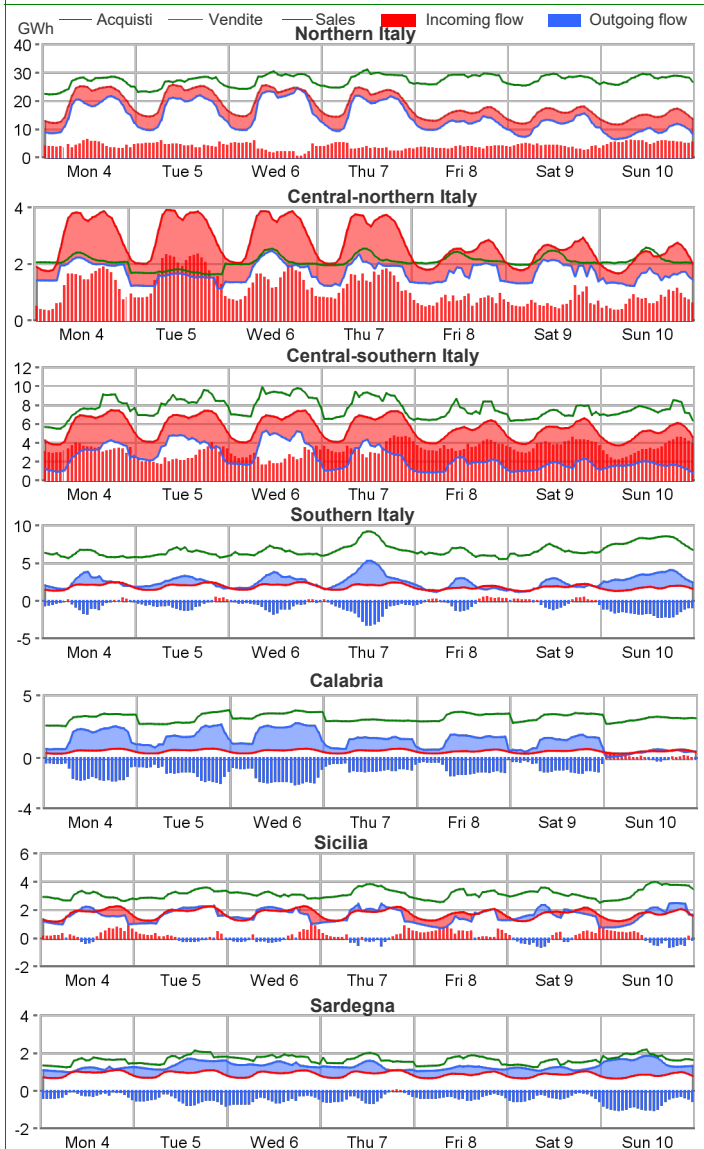
Volumes Sold by Source. Hourly Average

	Northern IT		Central-northern IT		Central-southern IT		Southern IT		Calabria		Sicilia		Sardegna	
	MWh	Var	MWh	Var	MWh	Var	MWh	Var	MWh	Var	MWh	Var	MWh	Var
Conventional	9,192	-3.3%	705	-5.1%	1,467	-24.7%	1,298	29.6%	1,157	17.9%	981	12.9%	938	-1.3%
Gas	8,150	-3.4%	653	-4.7%	994	-8.7%	1,078	32.1%	1,118	24.2%	952	13.3%	548	0.4%
Coal	159	-14.3%	-	-	294	-56.3%	-	-	-	-	-	-	346	-2.1%
Other	883	-0.7%	52	-10.0%	178	-3.5%	220	18.5%	40	-51.4%	29	2.7%	43	-13.5%
Renewable	5,101	5.6%	999	1.8%	999	-42.0%	1,318	-44.9%	346	-29.2%	681	-27.2%	402	-36.1%
Hydro	3,840	6.0%	232	24.8%	473	-14.0%	304	-16.4%	67	-23.8%	104	-15.1%	32	-29.9%
Geothermal	-	-	610	-2.2%	-	-	-	-	-	-	-	-	-	-
Wind	14	-45.2%	19	-61.0%	330	-65.8%	856	-53.4%	241	-32.9%	511	-30.5%	309	-38.7%
Solar and other	1,247	5.6%	137	12.2%	196	-5.3%	159	-18.7%	37	-7.9%	65	-14.6%	60	-23.2%
Pumped Storage	263	9.8%	-	-	27	3.7%	-	-	-	-	2	2,500.0%	0	3.7%
Total	14,556	-0.2%	1,704	-1.2%	2,493	-32.5%	2,616	-22.9%	1,503	2.3%	1,663	-7.8%	1,340	-15.1%

Zonal Selling Price

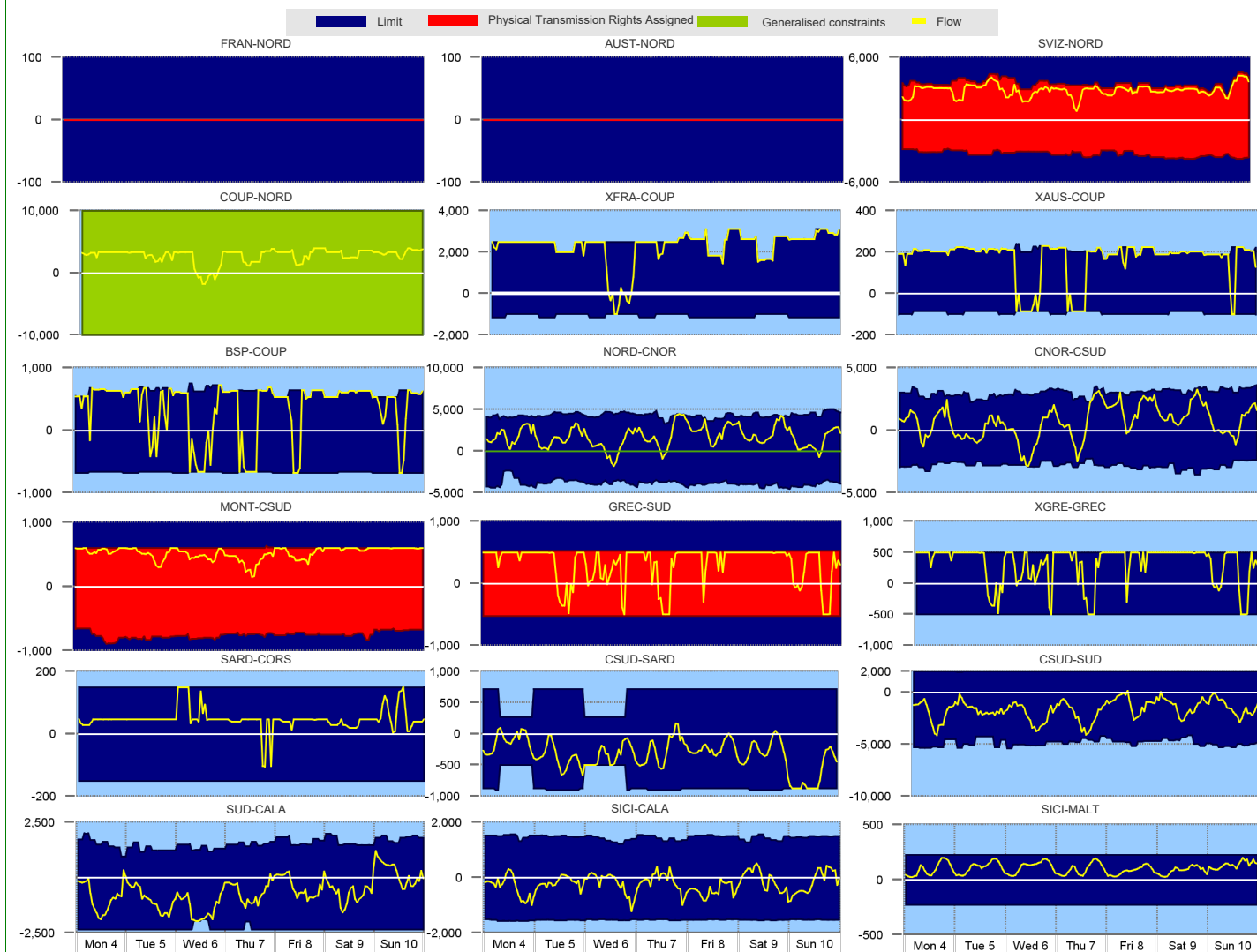


Zonal Volumes

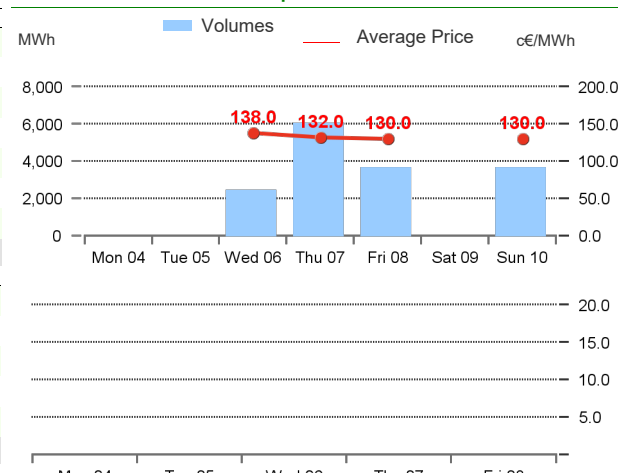


		Rent		Direction frequency		Average Physical Transmission Rights Assigned		Average flow		Average use of Physical Transmission Rights Assigned	
		Thousands of €		% of hours		MWh		MWh		%	
		Week no. 49	Week no. 48	Week no. 49	Week no. 48	Week no. 49	Week no. 48	Week no. 49	Week no. 48	Week no. 49	Week no. 48
Explicit auction Transmissions											
France - Northern It.	FRAN-NORD	-	-	-	-	0	0	-	-	-	-
	NORD-FRAN	-	-	-	-	0	0	-	-	-	-
Switzerland - Northern It.	SVIZ-NORD	-	-	100.0%	100.0%	3,473	3,825	2,843	2,470	81.9%	64.6%
	NORD-SVIZ	-	-	-	-	3,262	3,313	-	-	-	-
Austria - Northern It.	AUST-NORD	-	-	-	-	0	0	-	-	-	-
	NORD-AUST	-	-	-	-	0	0	-	-	-	-
Slovenia - Northern It.	SLOV-NORD	-	-	-	-	0	0	-	-	-	-
	NORD-SLOV	-	-	-	-	0	0	-	-	-	-
Montenegro - Central Southern It.	CSUD-MONT	-	-	-	6.5%	751	710	-	109	-	1.0%
	MONT-CSUD	-	-	100.0%	93.5%	600	610	525	478	87.4%	73.3%
Greece - Southern It.	GREC-SUD	-	-	82.7%	40.5%	525	239	442	467	69.6%	79.0%
	SUD-GREC	-	-	17.3%	2.4%	525	239	275	170	9.0%	1.7%
National Transmissions											
		Thousands of €		% of hours		MWh		MWh		%	
		Week no. 49	Week no. 48	Week no. 49	Week no. 48	Week no. 49	Week no. 48	Week no. 49	Week no. 48	Week no. 49	Week no. 48
Northern It. - Central-Northern It.	NORD-CNOR	47	-	92.3%	29.8%	4,327	4,299	1,939	1,265	1.2%	--
	CNOR-NORD	-	-	7.7%	70.2%	3,846	3,771	665	1,048	--	--
Centr.-Northern It. - Centr.-Southern	CNOR-CSUD	28	4,435	68.5%	14.3%	3,024	3,013	1,398	1,120	2.4%	--
	CSUD-CNOR	-	-	31.5%	85.7%	2,792	2,295	851	1,746	0.6%	47.0%
Central-Northern It. - Corsica	CNOR-CORS	2	-	2.4%	-	150	300	120	-	1.8%	--
	CORS-CNOR	-	-	11.9%	53.0%	150	300	87	213	--	--
Corsica - Sardegna	SARD-CORS	101	634	98.2%	100.0%	150	300	50	150	4.2%	38.1%
	CORS-SARD	-	-	1.8%	-	150	300	103	-	--	--
Sardegna - Corsica AC	SARD-COAC	-	-	100.0%	100.0%	110	110	56	34	--	--
	COAC-SARD	-	-	-	-	110	110	-	-	--	--
Central-Southern It. - Sardegna	CSUD-SARD	370	-	7.7%	0.6%	624	697	63	30	--	--
	SARD-CSUD	-	-	92.3%	99.4%	800	887	354	487	11.3%	6.0%
Central-Southern It. - Southern It.	CSUD-SUD	-	2,485	1.2%	-	2,920	3,186	70	-	--	--
	SUD-CSUD	-	-	98.8%	100.0%	4,847	4,426	1,673	2,434	--	8.3%
Southern It.-Calabria	SUD-CALA	37	4	16.1%	8.9%	1,543	1,594	392	222	--	--
	CALA-SUD	-	-	83.9%	91.1%	2,324	2,156	871	921	1.8%	0.6%
Sicilia-Calabria	SICI-CALA	-	-	29.2%	43.5%	1,463	1,445	190	348	--	--
	CALA-SICI	-	-	70.8%	56.5%	1,529	1,537	390	349	--	--
Sicilia - Malta	SICI-MALT	-	-	100.0%	100.0%	225	225	105	93	--	--
	MALT-SICI	-	-	-	-	225	225	-	-	--	--
Market Coupling Transmissions											
IT Coupling - Northern It.	NORD-COUP	-	-	6.0%	19.6%	10,000	10,000	849	927	--	--
	COUP-NORD	-	-	93.5%	80.4%	10,000	10,000	3,044	2,507	--	--
Coupling - France Coupling	COUP-XFRA	-	-	3.6%	19.0%	1,081	1,066	615	845	1.2%	14.3%
	XFRA-COUP	-	-	93.5%	77.4%	2,508	2,484	2,454	1,981	86.3%	38.1%
Coupling - Slovenia Coupling	COUP-BSP	-	-	17.3%	21.4%	670	669	553	395	10.1%	8.3%
	BSP-COUP	-	-	80.4%	76.2%	620	629	563	542	68.5%	55.4%
Coupling - Austria Coupling	COUP-XAUS	-	-	11.3%	23.2%	93	91	85	85	10.7%	22.0%
	XAUS-COUP	-	-	86.3%	74.4%	207	209	203	204	82.7%	68.5%
Greece - Greece coupling	XGRE-GREC	-	-	82.7%	40.5%	500	500	442	467	58.3%	91.1%
	GREC-XGRE	-	-	17.3%	2.4%	500	500	275	170	4.2%	57.1%

Transiti. MWh



Daily Products Market (MPEG)

Products	Price			Volumes		Open Positions		The unit price differential			
	minimum c€/MWh	maximum c€/MWh	average c€/MWh	MW	MWh	MW	MWh	MWh			
Baseload											
Monday 4											
Tuesday 5											
Wednesday 6	138.0	138.0	138.0	100	2,400	100	2,400				
Thursday 7	130.0	135.0	132.0	250	6,000	250	6,000				
Friday 8	130.0	130.0	130.0	150	3,600	150	3,600				
Saturday 9											
Sunday 10	130.0	130.0	130.0	150	3,600	150	3,600				
Week	130.0	138.0	132.5	650	15,600						
Peakload											
Monday 4	-	-	-	-	-	-	-				
Tuesday 5	-	-	-	-	-	-	-				
Wednesday 6	-	-	-	-	-	-	-				
Thursday 7	-	-	-	-	-	-	-				
Friday 8	-	-	-	-	-	-	-				
Week											
TOTALE				650	15,600						

Forward Electricity Market (MTE)

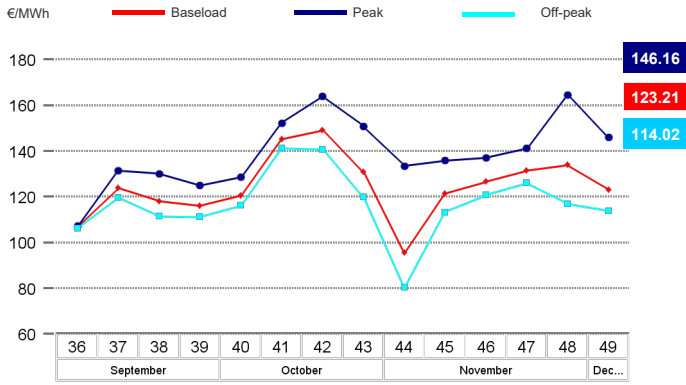
Products baseload	Market					OTC				Total			
	Minimum Price €/MWh	Maximum Price €/MWh	Check Price* €/MWh	% change	Trades No.	Volumes		Volumes		Volumes		Open Positions*	
January 2024	-	-	117.16	-10.0%	-	-	-	-	-	-	-	-	-
February 2024	-	-	117.66	-10.0%	-	-	-	-	-	-	-	-	-
March 2024	-	-	109.17	-20.0%	-	-	-	-	-	-	-	-	-
Quarter 1, 2024	-	-	114.60	-13.5%	-	-	-	-	-	-	-	3	6,549
Quarter 2, 2024	-	-	108.50	-5.0%	-	-	-	-	-	-	-	-	-
Quarter 3, 2024	-	-	123.20	-10.0%	-	-	-	-	-	-	-	-	-
Quarter 4, 2024	-	-	128.72	-5.0%	-	-	-	-	-	-	-	-	-
Year 2024	-	-	118.80	-8.5%	-	-	-	-	-	-	-	3	26,352
Total													32,901
Products peakload													
January 2024	-	-	128.91	-10.0%	-	-	-	-	-	-	-	-	-
February 2024	-	-	126.80	-10.0%	-	-	-	-	-	-	-	-	-
March 2024	-	-	113.76	-20.0%	-	-	-	-	-	-	-	-	-
Quarter 1, 2024	-	-	123.33	-13.2%	-	-	-	-	-	-	-	-	-
Quarter 2, 2024	-	-	108.84	-5.0%	-	-	-	-	-	-	-	-	-
Quarter 3, 2024	-	-	125.76	-10.0%	-	-	-	-	-	-	-	-	-
Quarter 4, 2024	-	-	147.02	-5.0%	-	-	-	-	-	-	-	-	-
Year 2024	-	-	126.32	-8.4%	-	-	-	-	-	-	-	-	-
Total													0
TOTAL													32,901

* Referred to the last trading session of the week

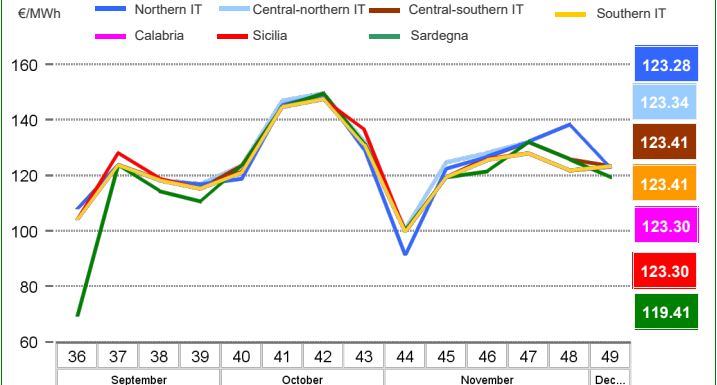
OTC Registration Platform (PCE) - Transactions registered with delivery in week

	Transactions registered			Schedules	Injection		Withdrawal	
	MWh	% change	Structure		MWh	% change	MWh	% change
Baseload	638,027	4.4%	14.5%	Requested	1,335,901	-1.9%	1,898,448	+4.0%
Peak	120	0.0%	0.0%	Rejected	134,803	-8.9%	0	-99.9%
Off Peak	216	0.0%	0.0%	Registered	1,201,098	-1.0%	1,898,448	+4.0%
Non Standard	3,735,530	3.0%	85.1%	Scheduled deviation	1,429,682	+8.8%	732,332	+4.2%
Bilaterals	4,373,894	3.2%	99.6%	Balance of schedules			697,350	
MTE	1,512	0.0%	0.0%					
MPEG	15,600	-18.8%	0.4%					
PCE total	4,391,005.58	3.1%	100.0%					
Net position	2,630,780	+4.1%	+59.9%					

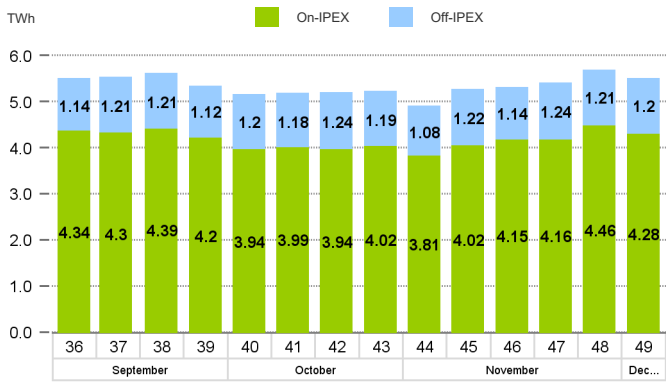
MGP - Purchasing Price (PUN)



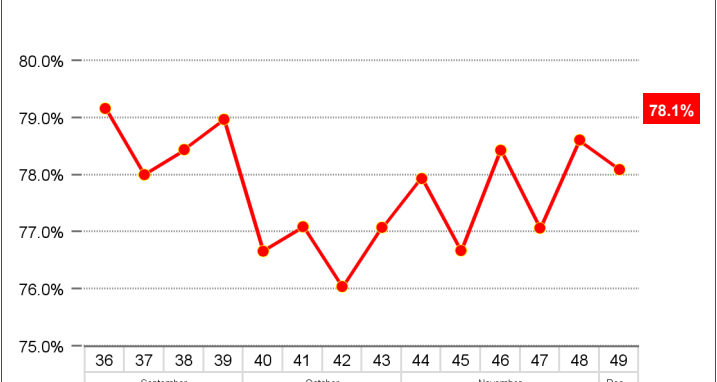
MGP - Selling Price



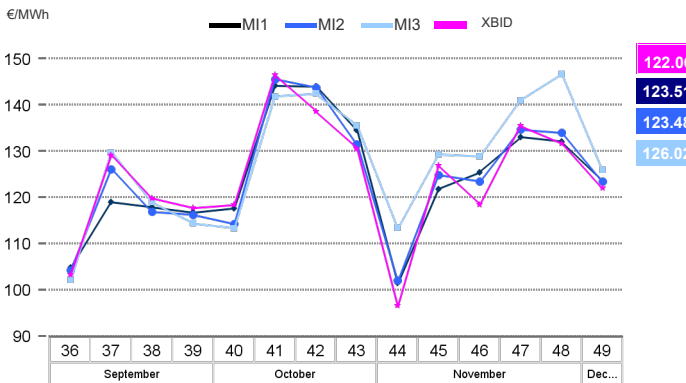
MGP - Volumes



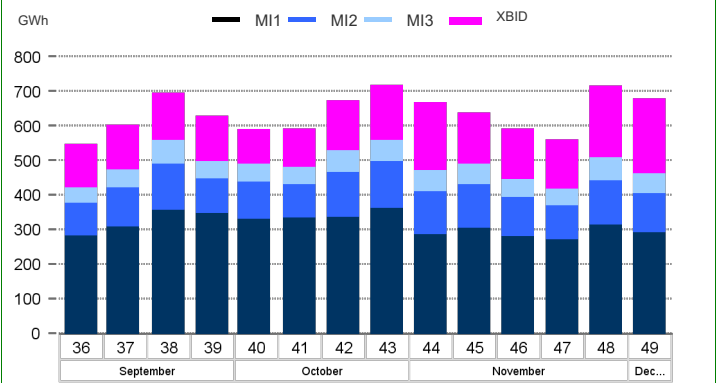
MGP - Liquidity



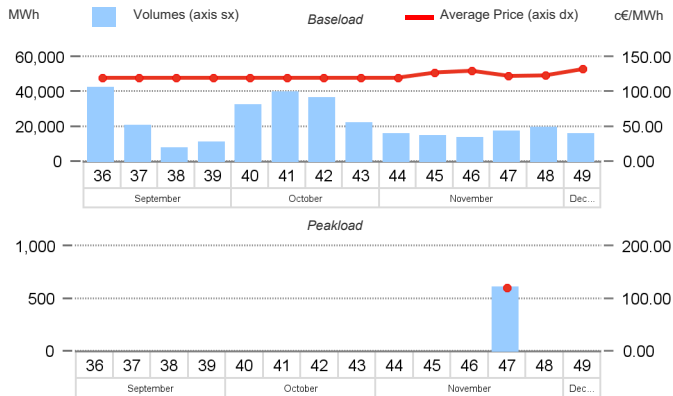
Intra-Day Market (MI) - Prices



MI - Volumes



Daily Products Market (MPEG)



OTC Registration Platform (PCE)

